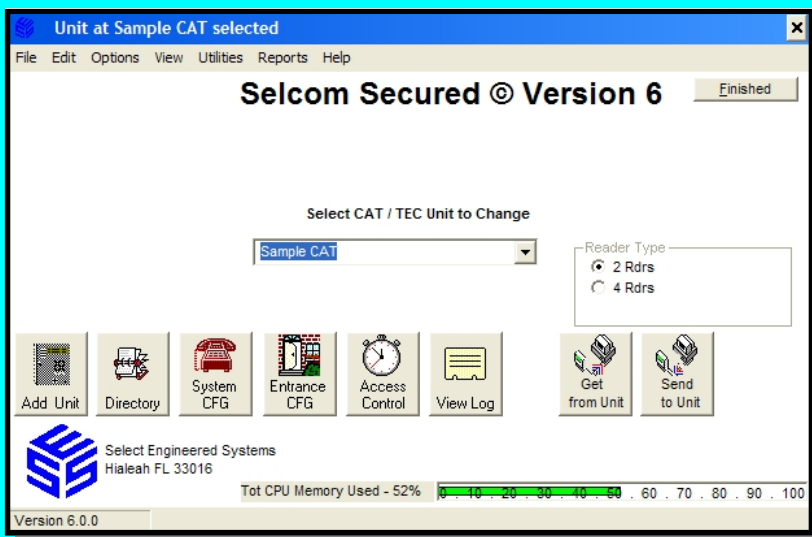


SELCOM Secured © Version 6

Programming Software for Windows 2000 / XP / Vista



Selcom Secured © Version 6
is provided on CD



Selcom Secured is a rewritten version of Selcom that allows Microsoft library files that it uses to be **isolated** for its own use, and are not shared with other applications. Also Selcom Secured is **protected** and when activated, the library files that may have been deleted, changed manually or damaged by a virus, are restored automatically by the system or the Selcom Secured CD will ask for by name, and the software will reinstall damaged or deleted files.

- **Search** for any name or number in both the directory and log data. This search capability improves the user finding the required information *fast*.
- A RAM Memory Usage Indicator shows the system performance needed for Selcom Secured to operate properly. Shows green (OK), yellow (don't run anything else) and red (shut down another application to run Selcom Secured).
- **Full page reports** for the directory, log and configuration.
- **Bulk loading:**
 - Cards, transmitters or wiegand numbers for keypads:
 - Can be loaded by column or row for CAT (data base is 6 cards per entry).
 - Can be loaded to an existing or new data base.
 - Can be loaded by column for TEC (data base is 1 card per entry).
 - Can be loaded by increment, i.e.; 6, 12, 18, 24, etc.
 - PIN (personal identification numbers), used to enter via the keypad:
 - Can be loaded by increment.
 - Telephone numbers or extensions for a no phone bill system or PBX.
- **Manual** for Selcom is available while running Selcom Secured.
- **Note Fields** allows users to maintain two note fields for each directory entry.

"Select...Don't Settle"



Select
Engineered
Systems, Inc.

ACCESS CONTROL

Overview:

- **Operating Systems:** Windows 2000, XP or Vista.
- **Hardware:**
 - Computer (processor) Pentium or better.
 - **Pentium II System Recommended**
 - Application RAM **64 Mb. Recommended.**
 - Physical memory 32 Mb.
 - Available hard disk storage 32 Mb. min.
- CD-ROM for installation of software.
- Choose the default site that will always show up first.
- Controls available entrances for CAT or TEC.
- Controls all relays for elevator control used with CAT.
- Hard drive space is the only limit to the numbers of sites.
- On screen **Help** is provided for each field. Put the cursor over the field, and the parameters of that field appear.
- Sample CAT and TEC sites as examples are provided to assist in learning how to use the program.
- Easy to use. Supports CAT units as well as new and existing TEC units, including TEC1 series.
- "Setup Wizard" is provided to give you step by step instructions for installing a New CAT or TEC.
- Four levels of authority allows the owner to decide what privileges each user will have to operate the system.
- Hot Buttons access common tasks from the Main Menu.
- Incorporates a new style directory view and editing system with rapid sorting for quick finds of any data.
- Two note fields up to 255 characters each, per directory entry.
- Full page reports for Configuration, Log and Directory.
- System configuration is displayed on one screen.
- Entrance control configuration provided for TEC and CAT.
- All access control data is on one screen, i.e. Time zones, Access levels with selector for first eight, next eight entrances (CAT only), Access groups, Holidays, and Automatic Entrance unlock and relock.
- Log transaction buffer information stored in formatted files, with individual log files for each CAT / TEC unit.
- Log viewer provides sorting of the log events and does not alter the data in the log.
- Unit data configuration information on one screen.
- Uses any Windows registered modem.
- **No Modem Strings. No Modem Speed settings.**
- Choose the information to *Send* or *Get* from CAT / TEC.
- "Send Updates" allows you to send only updates to minimize connection time.
- Sleep function allows multiple CATs / TECs on phone line.
- Additional fields that are user defined, as well as fields for parking space assignment.
- Optional NIC (OPTNIC) available for Networked Systems.

"HOT" BUTTON Functions:



CLICK FOR: A new installation or add an additional TEC or CAT site with step by step Q & A. For users with multiple sites, Selcom Secured does them all.



CLICK FOR: Setting up the directory information including names, PINs, phone numbers, card / transmitter numbers. Changes will produce an update "flag". Also search for any name or number.



CLICK FOR: Set up or changing system parameters for a new site or existing site.



CLICK FOR: Set up of entrances including naming, open time, alarm time, open during programming and more.



CLICK FOR: Set up or changing the access levels, time zones, access groups, holidays and auto unlock and relock functions.



CLICK FOR: Reviewing the log buffer that has been brought from either the CAT or TEC system(s). Also search for any name / number.



CLICK TO: Retrieve data. Choices include: Get All, Get Directory, Get Configuration or Get Log Buffer. You may also erase the buffer.



CLICK TO: Send data and updates. Choices include: Send All, Send Configuration, Send Directory or Send Updates. Also the password may be changed from here.