

Select Touch™



Fingerprint Verification Reader

Select Touch Features:

SelectTouch™ provides security conscious companies, the ability to easily add fingerprint verification to their existing access control systems:

- Without having to cable any additional wire to any door where **SelectTouch™** is installed.
- Without having to re-badge any employee or contractor. Use your existing access control cards at all card only doors and fingerprint verification doors.
- Without having to retrain any operator of the installed access control system. (**SelectTouch™** fingerprint verification is transparent to the security operators.)



Electronic access control systems grant entry after an acceptable form of identification such as:

- What you know (PIN)
- What you have (access card)
- Who you are (biometric ID)
- A combination of PIN, Card or Biometric ID

SelectTouch™ adds that second level of security by requiring biometric fingerprint verification in order to gain access. Previously issued identification and access cards act as the "Template Pointer ID" to a previously recorded and stored fingerprint template. The presented finger must now match the stored fingerprint template in order to gain access. User-friendly **SelectTouch™** fingerprint enrollment software allows you to select the storage location of fingerprint templates. Templates can be stored in the **SelectTouch™** reader, or on a Network Server. For difficult to read and/or dry fingers, **SelectTouch™** software provides for one of five selectable sensitivity settings per individual.

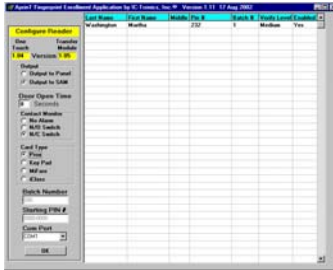
User feedback is via a single tri-color red, green and amber LED as well as Audio Feedback for invalid PIN or Card and combination Audio and LED for valid entries. The rugged alloy protective cover allows for outdoor installations and comes standard in Dark Grey / Black with optional colors available upon request.

Fingerprints are captured using the **SelectTouch™** Enrollment Station and converted to a fingerprint template. Fingerprint templates are then stored on the enrollment computer. These fingerprint templates along with their "Template Pointer ID" is loaded into the appropriate readers using the **SelectTouch™** software via TCP/IP laptop computer interface to the secure wall opposite the reader. **SelectTouch™** templates meet biometric industry standards and may also be stored on a network server and downloaded to the IP addressable **SelectTouch™** units.

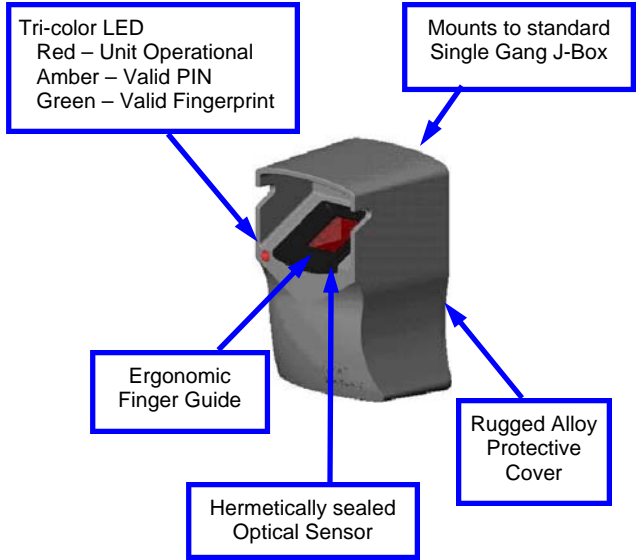
Select Touch™

FEATURES

SelectTouch™ is field configurable to meet the most stringent demands of our most important customer – the system integrator or installation company.



The Fingerprint Enrollment software configures **SelectTouch™** to operate with existing access cards, smart cards or as a stand alone unit.



SPECIFICATIONS

Template Storage	
In Reader with Card/PIN	1999 Fingerprint Templates Per Reader
In Reader with One to Few Look-Up	1000 Fingerprint Templates
In Smart Card	Unlimited (future development)
On Network Server	Unlimited
Template Size	512 Bytes
Templates per Cardholder	All Eight Fingers and Two Thumbs
Verification Time	Less than 1 second
Enrollment Time	Less than 3 seconds
Finger Rotation	+/- 18 degrees
False Accept/False Reject Rate	Variable, Software configurable
Power Requirements	12VDC
Current Draw	600 ma
Operating Temperatures	40 to 140 degrees Fahrenheit
Operating Temp. w/ Heater Option*	-2 to 140 degrees Fahrenheit
Card Reader Input	Standard Wiegand Connections 26 bits
Output Data	26 Bit Wiegand Standard
Dimensions	H 5 1/16" W 3 5/32" D 2 1/2"
Weight	1.8 lbs

* Separate Power Supply

Specifications subject to change without notice.

"Select...Don't Settle"



**Select
Engineered
Systems, Inc.**

0607