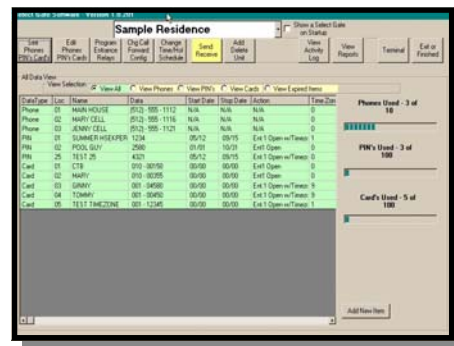


SELECT GATE -2 Serial Adapter

USER GUIDE



Select Entry Systems

Select Gate 2 Serial adapter installation guide.

Select Gate 2 Serial adapter overview.

The OPTSG2SER serial adapter permits communications from a SG-2 and the SG-2 serial adapter to a computer (such as a laptop) with a serial port. This is useful for initial setup of a SG-2, or for field modification without relying on keypad commands and/or disturbing resident.



The following items are required:

SG-2 (already installed).

OPTSG2SER serial adapter (supplied).

15-foot 9-pin serial cable (supplied).

Communications software such as Select Gate Software (supplied) or Hyper-Term.

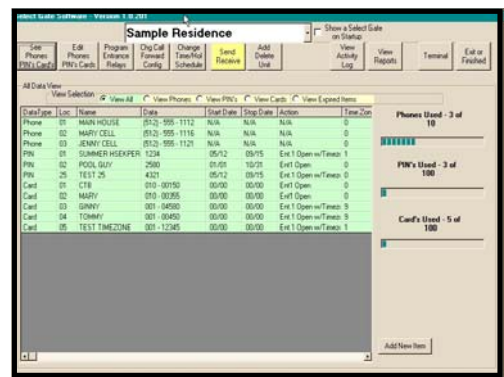
A personal computer (NOT supplied).



OPTSG2SER serial adapter (supplied)

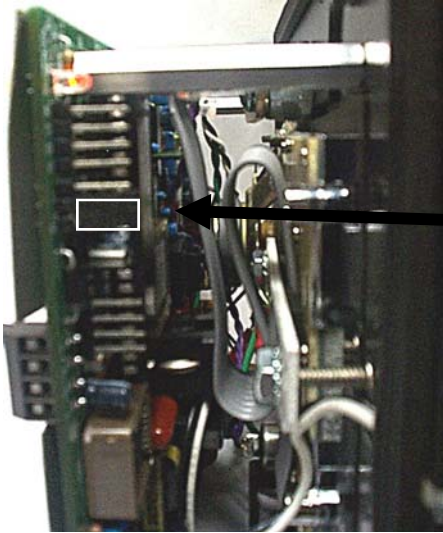


15-foot 9-pin serial cable (supplied).



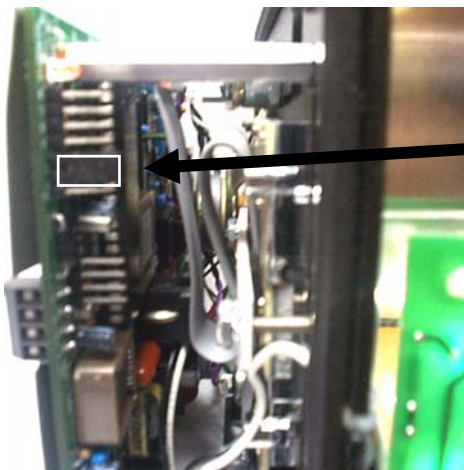
Select Gate Software (supplied).

Select Gate 2 Serial adapter installation guide.

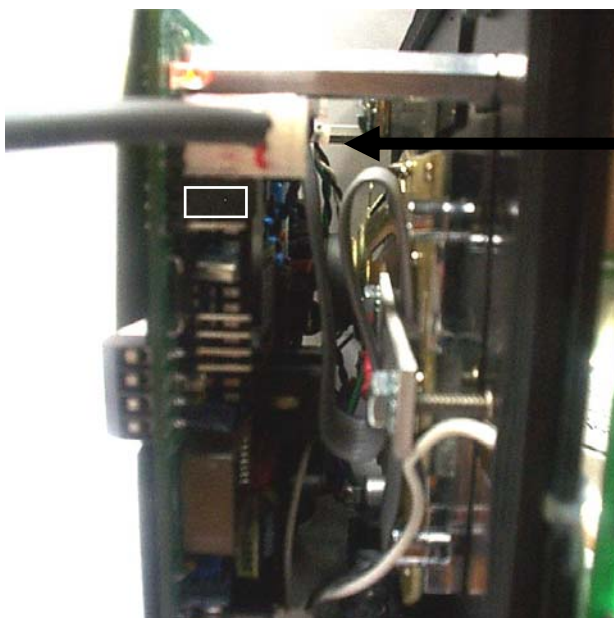


Select Gate 2 Serial adapter preparation.

- 1) Power down SG-2.
- 2) Open cover of SG-2 and remove.
- 3) Identify upper left side while facing SG-2.
- 4) Locate default jumper location, shown at left.



- 5) Move jumper from select pins 2-3 to select pins 1-2 as shown at left.



- 6) Plug in serial cable on 4-pin connector, as shown at left.
- 7) Re-place SG-2 back in cabinet and temporarily secure it. Do NOT attempt to close and lock door fully, since the OPTSG2SER cable may become pinched and damaged.
- 8) Re-power SG-2.

Select Gate 2 Serial adapter installation guide.

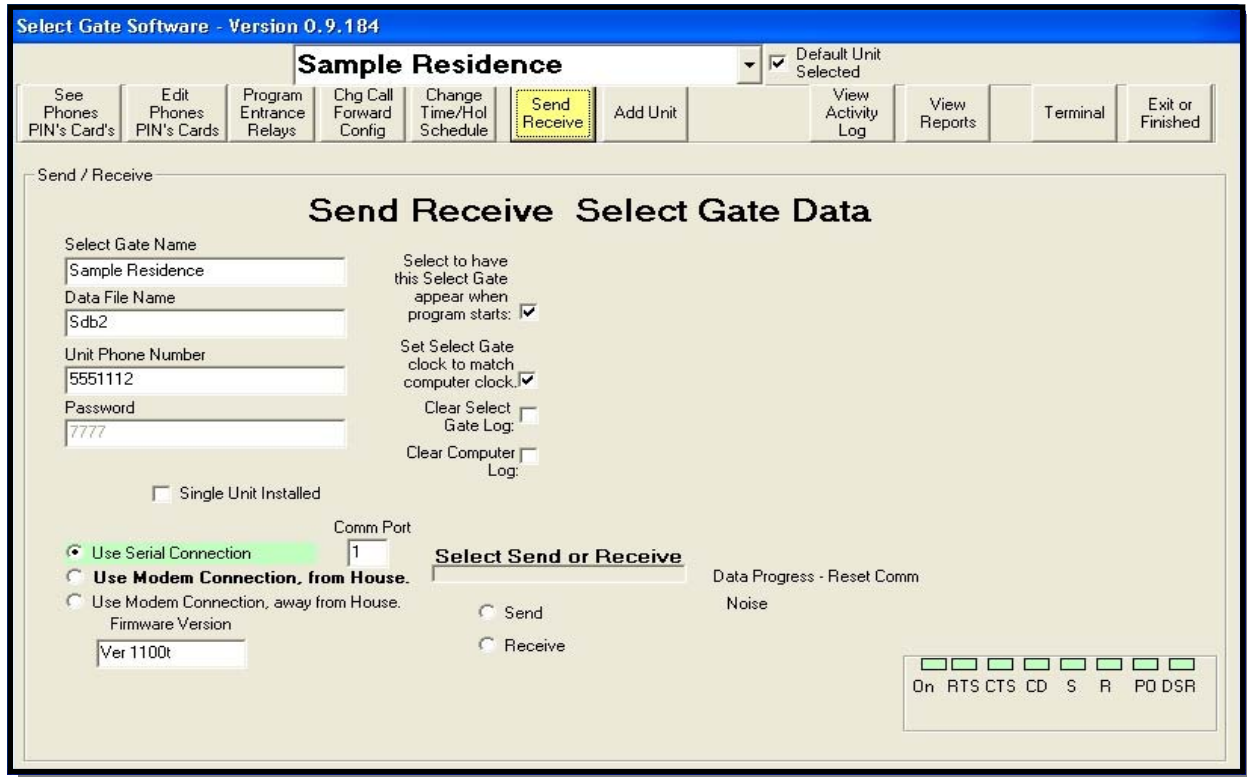


- 9) Insert male end of supplied 9-pin 15-foot cable into the female 9-pin socket on the OPTSG2SER as shown.
- 10) Insert the female end of supplied 9-pin 15-foot cable into the male 9-pin socket on the back of a personal computer or laptop.
- 11) If your computer does not have a 9-pin serial port socket on the back but has a 25-pin socket, you will require a 9-pin to 25-pin adapter.
(Not provided, available from computer accessories suppliers.)
- 12) If your computer does not have a 9-pin serial port socket on the back bus has a USB connector, you will require a USB to Serial adapter.
(Not provided, available from computer accessories suppliers.)

NOTE:

If you have to use a USB-to-Serial adapter you **MUST** use Select Gate v 1.2.284 or greater. Older Select Gate software versions may not communicate reliably with USB ports.

Select Gate 2 Serial adapter installation guide.



Select Gate Software Screen Example

Software setup.

Select Gate:

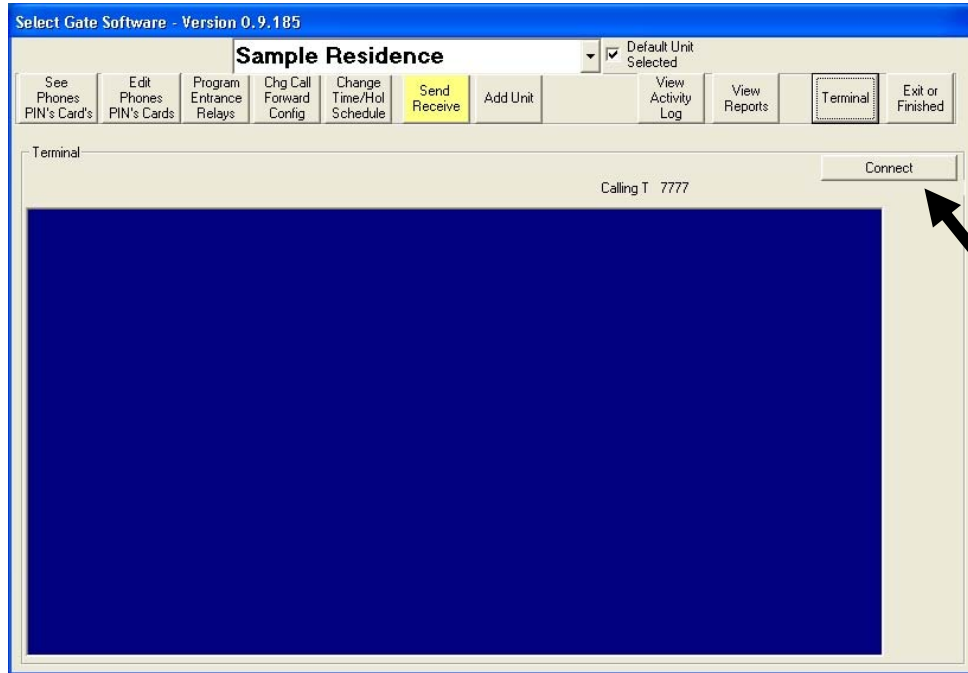
- 1) If you have not done so already, install the Select Gate Software following the instructions on the Select Gate manual and CD.
- 2) After installation and startup select the Send receive Screen.
- 3) Select the Serial port radio button (lower left side of screen).
- 4) Select the serial port assigned from your computer. It will usually be Com 1 or Com 2. Check your computer's Device Manager to determine which serial port you are connected to.
- 5) Put that Com port number in the white text box. The default is 1.
- 6) Continue on to the next page.

Hyper-Term

- 1) If you do not have access to Select Gate software you may also use Hyper-Term communications software that is built in to most Windows systems.
- 2) Set up a New Connection and name it SG-2.
- 3) Set the Com port to the serial port assigned by your computer.
- 4) Set the communications parameters in the Properties menu to: 9600, N, 8, 1.
- 5) Select the Connect icon.
- 6) Press the ESC key on your keyboard.
- 7) You will see the "PASSWORD" prompt.
- 8) Key in the 4 digit password for the SG-2. (Factory Default = 7777.)
- 9) Follow the menu selections.

Select Gate 2 Serial adapter installation guide.

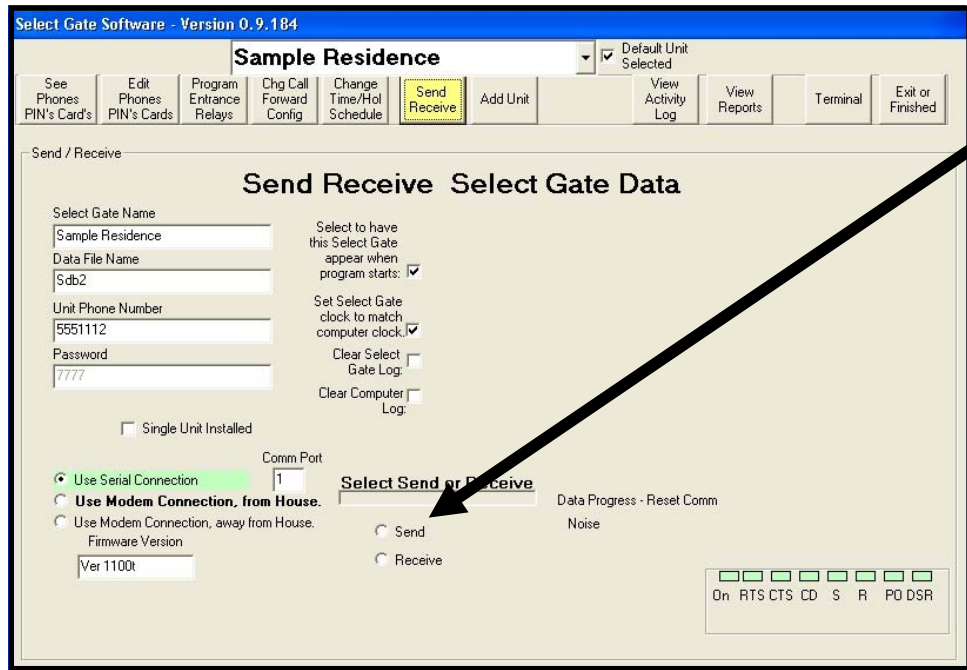
- 7) Click on the Terminal button (Upper right portion of screen.
- 8) Click on the Connect button.
- 9) Press "ESC" key
- 10) Key in the 4 digit password for the SG-2. (Factory Default = 7777.)
- 11) Follow the menu selections.



SELECT Connect

NOTE:

If preferred, and configuration and customer data has already been pre-programmed, click on Send Receive button and select "Send" and send all data automatically. (Screen pictured below may look slightly different, depending on selections and software version.)



SELECT Send

Select Gate 2 Serial adapter installation guide.



Troubleshooting:

1) LEDS off, No Communication:

Check computer is powered on.

Check SelectGate-2 is powered on.

Check connectors on each end of OPTSG2SER plugged in correctly.

Re-check jumper selection. (See page 3, Step 5.)

Jumper should be immediately adjacent to connector.

Pins on connector should not be off-set.

Check that supplied serial cable was used. (Other cables might be wired inverted.)

2) LEDS on, No Communication:

Check that correct Com port is selected.

To test for correct Com port operation:

A) Remove 9-pin connector from OPTSG2SER .

B) Temporarily short pins 2&3 on the 9-pin connector.

C) Start terminal communications program on computer. (Select Gate or Hyper-Term)

D) Press random keys on keyboard. Characters pressed should echo to the screen.

E) Remove short on pins 2&3 on the 9-pin connector.

F) Verify that keys pressed, no longer echo to the screen.

Check that computer communications speed settings are set to 9600 N, 8, 1.

For all other issues, refer to the software manual for further information.

12/05



Select Engineered Systems, Inc.
7991 West 26th Avenue
Hialeah, Florida 33016
Phone: 800.342.5737
Fax:305.823.5215
www.selectses.com