

HOW TO TRANSFER SELCOM SOFTWARE DATABASE FILES FROM ONE PC TO ANOTHER PC WITH SELCOM SECURED 7 OR SELCOM PREMIUM SOFTWARE ALREADY INSTALLED.

This Technical Support Note describes how to move the database files belonging to your old Selcom installation from one computer (PC) to another for use with Selcom Secured v.7 or Selcom Premium. This **does not** apply to TecBasic or Selcom Basic. It will explain how to locate your existing database, move the file(s) to the new PC, and restore the previous database information to the new PC.

KEY TERMS

GlobalID: A master database file consisting of a list of all the sites created by Selcom.

Blankd: Template used for creating sites.

Ndb# Files: Database files containing the directory information and panel settings, one for each site.

INSTALL AND RUN SELCOM v. 7 or SELCOM PREMIUM ONCE ON THE NEW PC

BEFORE transferring files, you **must have** installed Selcom Secured 7 software on the new computer with the highest User Account Control (UAC) setting and full Administrator privileges, and then have **run it at least once**. Doing so creates the Selcom 7 or Selcom Premium “Working File Location”. **This folder must be present on the new computer;** otherwise this procedure **will not work**, because files from the old PC need to be transferred to the working folder. **After running once close the Selcom 7 or Selcom Premium application.**

1) Locate the Selcom Folder on the Old PC

Location of Database Files in XP and Earlier
In older PCs (e.g. XP machines, etc.) database files are located in the folder **C:\Program Files\SES\Selcom Secured®**. See Figure 1 for an example of the database file location on a PC with Windows XP.

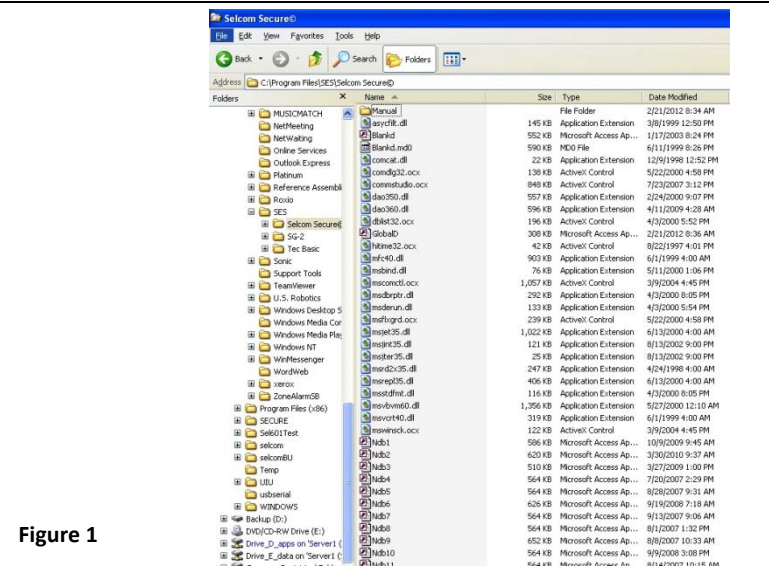


Figure 1

Location of Database Files in Windows Vista and Later

In newer PCs, database files are located in the folder **C:\SES\Selcom**. See Figure 2 for an example of the database file location on a PC with Windows 7. The folder is shown in the location bar at the top.

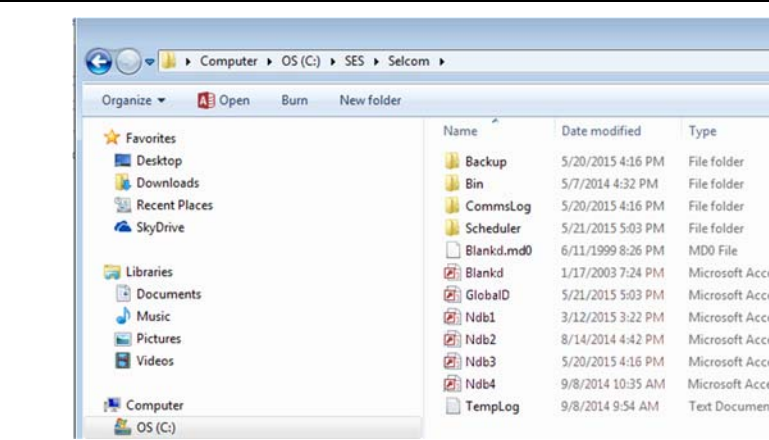


Figure 2

HOW TO TRANSFER SELCOM SOFTWARE DATABASE FILES FROM ONE PC TO ANOTHER PC WITH SELCOM SECURED 7 OR SELCOM PREMIUM SOFTWARE ALREADY INSTALLED.

2) COPY FILES FROM THE OLD PC ONTO YOUR STORAGE MEDIUM

First, make sure you have installed and run Selcom 7 or Selcom Premium as described above to create the Working File Location. Next, if Selcom Secured is running on the old PC, exit the application (**but do not shut down the PC**).

Navigate to the Selcom folder on the **old PC**, copy the GlobalD.mdb, blankd.mdb and ALL the ndb#.mdb files (where # corresponds to a number) onto a flash drive or other storage medium. (See Figure 3 for copy files example.)

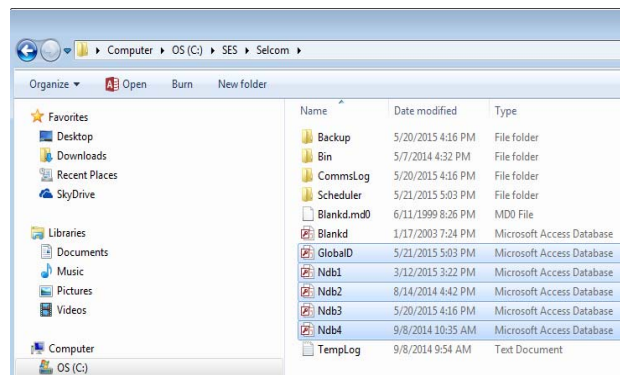


Figure 3

3) TRANSFER FILES TO THE NEW PC

If Selcom 7 or Selcom Premium is running on the new PC, exit the application (**but do not shut down the PC**).

Place the storage medium (e.g. the flash drive) with the files copied from the old PC into the new PC.

Navigate to the Working File Location “C:\SES\Selcom” folder on the **new PC** installed with Selcom 7 or Selcom Premium and copy the files from the storage medium into the Working File Location.

Windows will ask if you want to copy or overwrite/copy and replace. Select **Copy and Replace**. If the option is offered, select “Do this for all...”, as we must replace the existing GlobalD and **ALL** Ndb# files with the GlobalD, BlankD and **all** Ndb files from the old computer.

See Figure 4 for an example of the Windows replace prompt.

Note: Ndb1, 2 and 3 are SES samples; Ndb 4 and higher are user-created site databases.

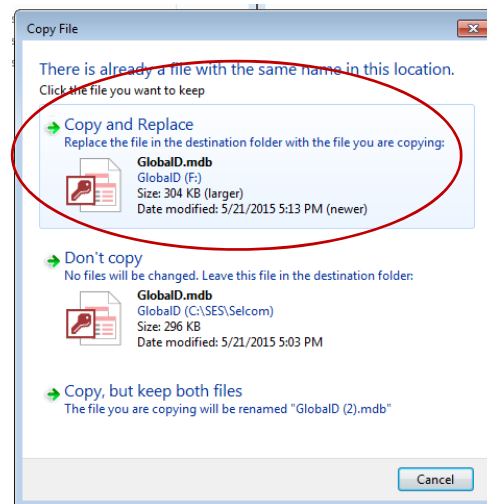


Figure 4

After copying, the next time you start up Selcom 7 or Selcom Premium on your new PC, it will open the old GlobalD.mdb that has all your site information. It will also be able to open ALL the user-created ndb4, 5, 6 ... site database files that hold your site information. Selcom Premium will also convert database files to Selcom Premium 7.1 file format.

“Select... Don't Settle”

1 (800) 342-5737 – Tel: (305) 823-5410 – Fax: (305) 823-5215

7991 West 26th Avenue, Hialeah, FL 33016

Web: www.selectses.com – Email: sales@selectses.com



Select Entry Systems

A Division of Select Engineered Systems