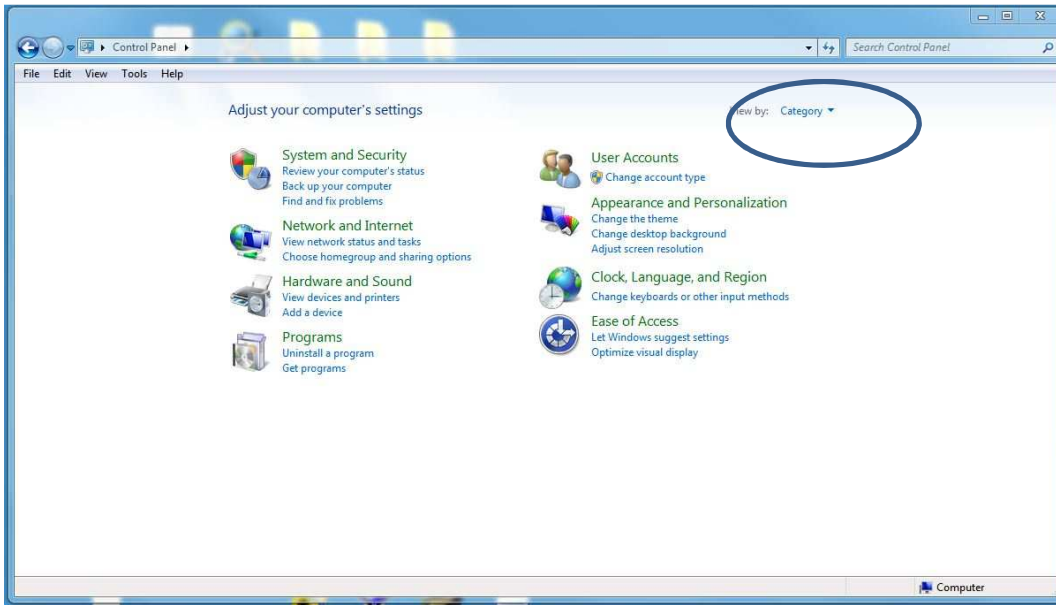


Windows Modem settings for SES products.

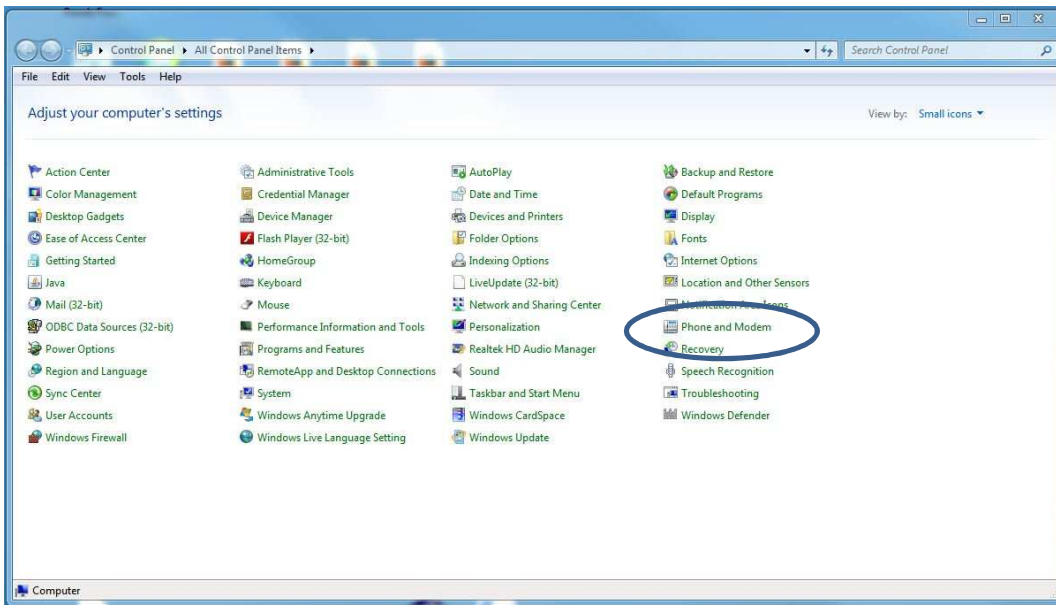
This TSN explains how to set up a dial-up modem to correctly communicate with SES products using modems set to specific modem parameters. These must be set prior to communications. Selcom Secured, Tec Basic and Select Gate software must be closed before making these changes.

Open the Control Panel and select: Phone and Modems.

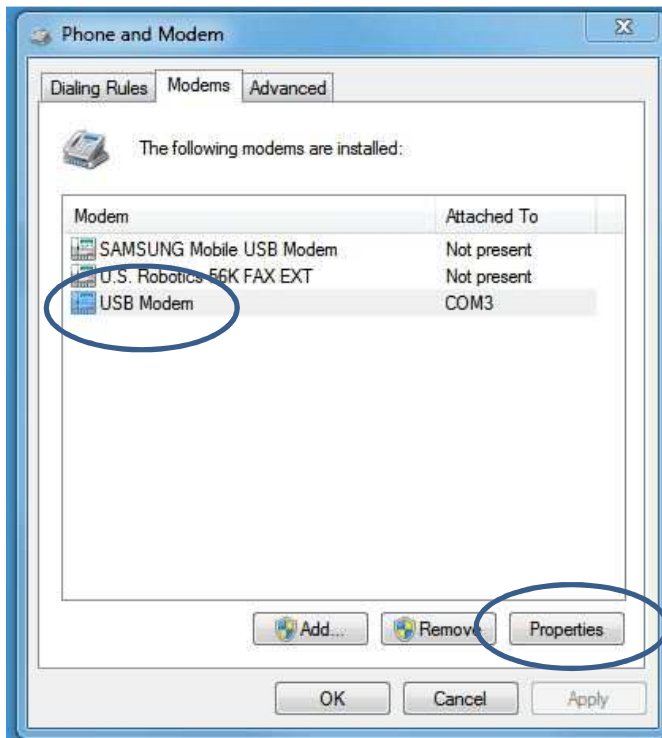
If you do not see that selection because your Control Panel setting appears like the one below, click on the Category drop-down arrow:



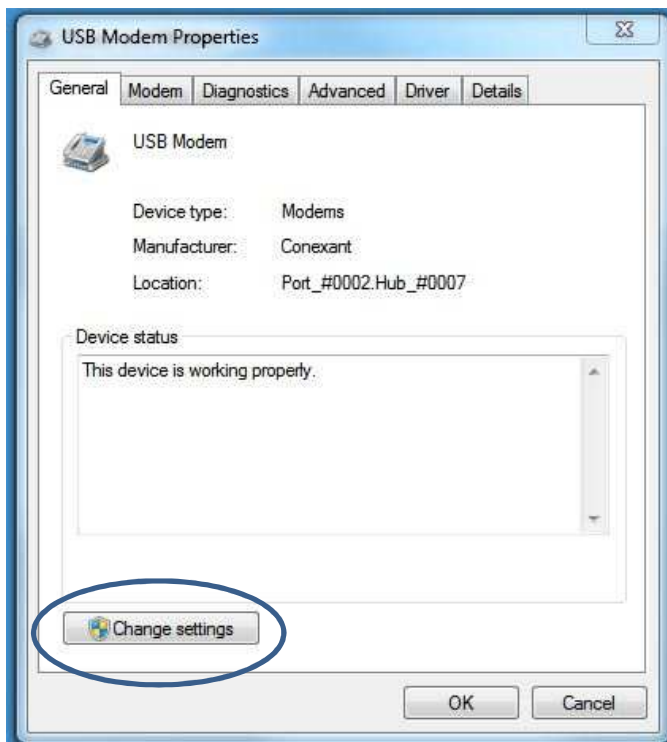
Select "View by Small Icons" as shown and then click on "Phone and Modem"



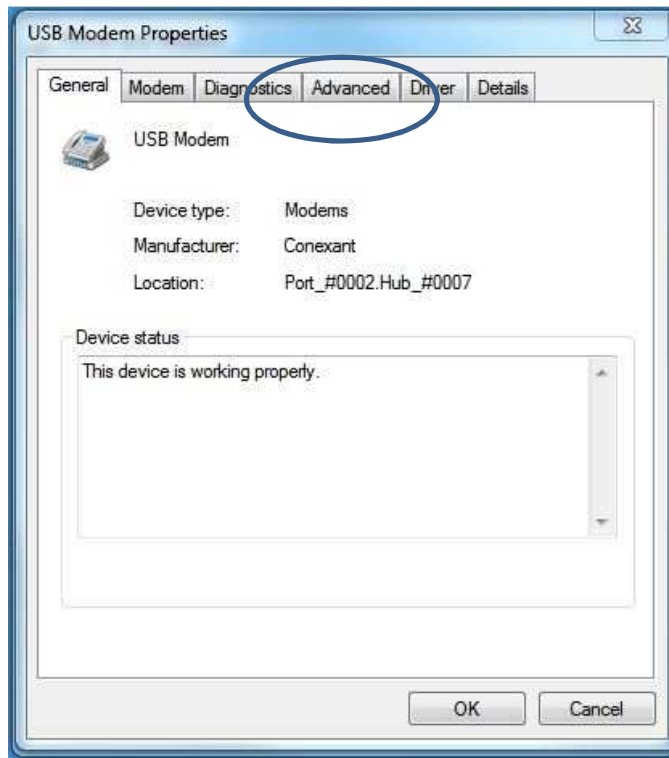
Click on the Modems tab and select your dial-up modem and then click on: Properties.



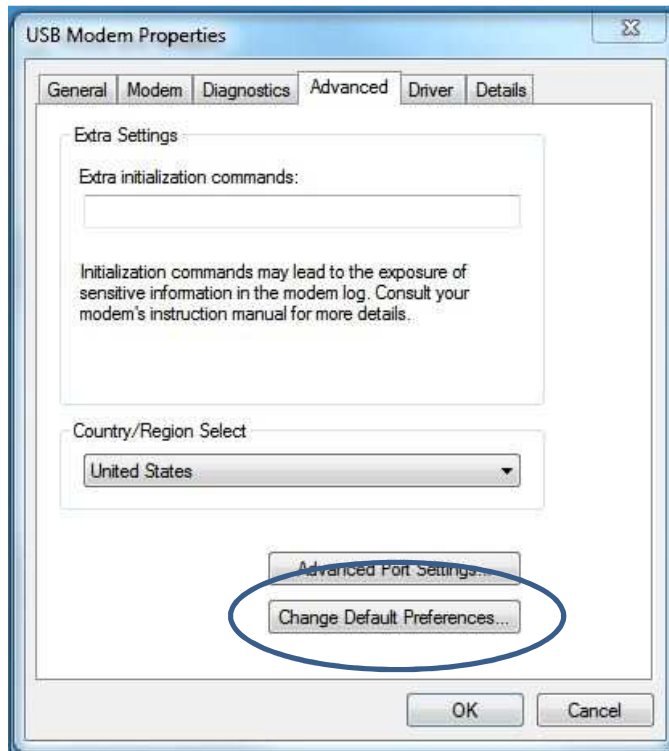
Click on Change Settings, or you won't be able to modify modem settings.



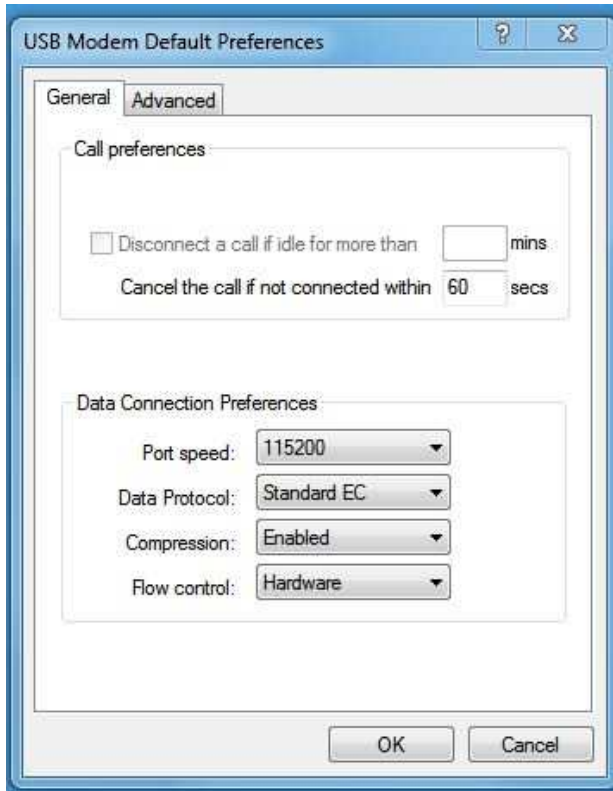
Click on the Advanced tab



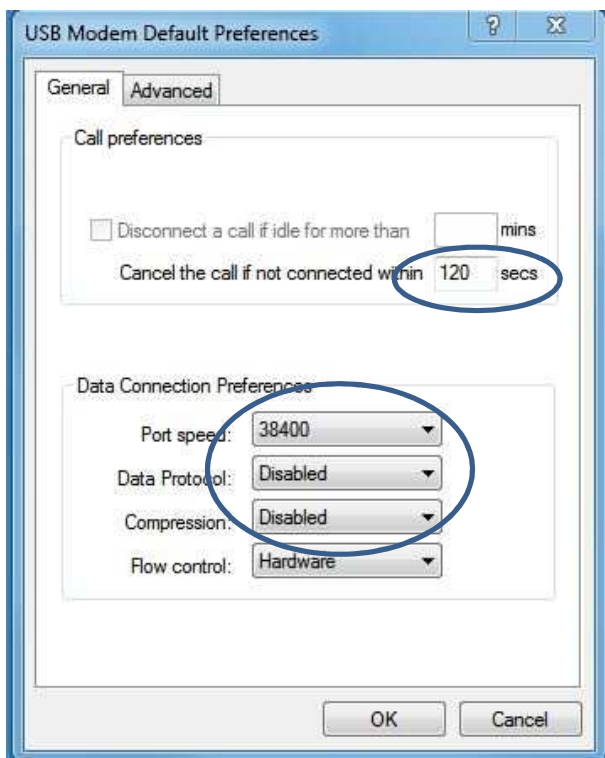
Then Select "Change Default Preferences".



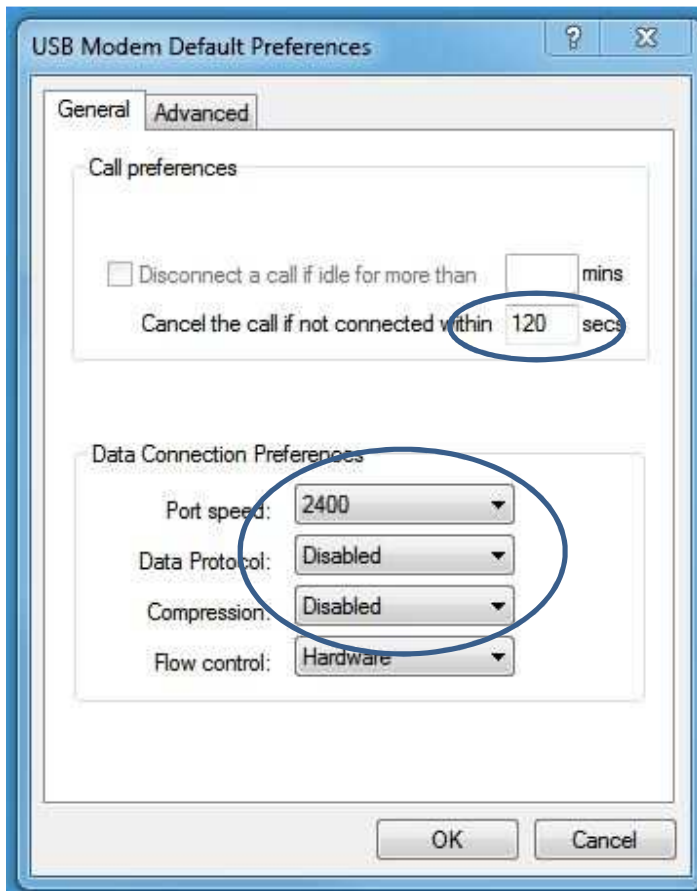
These are the default modem settings:



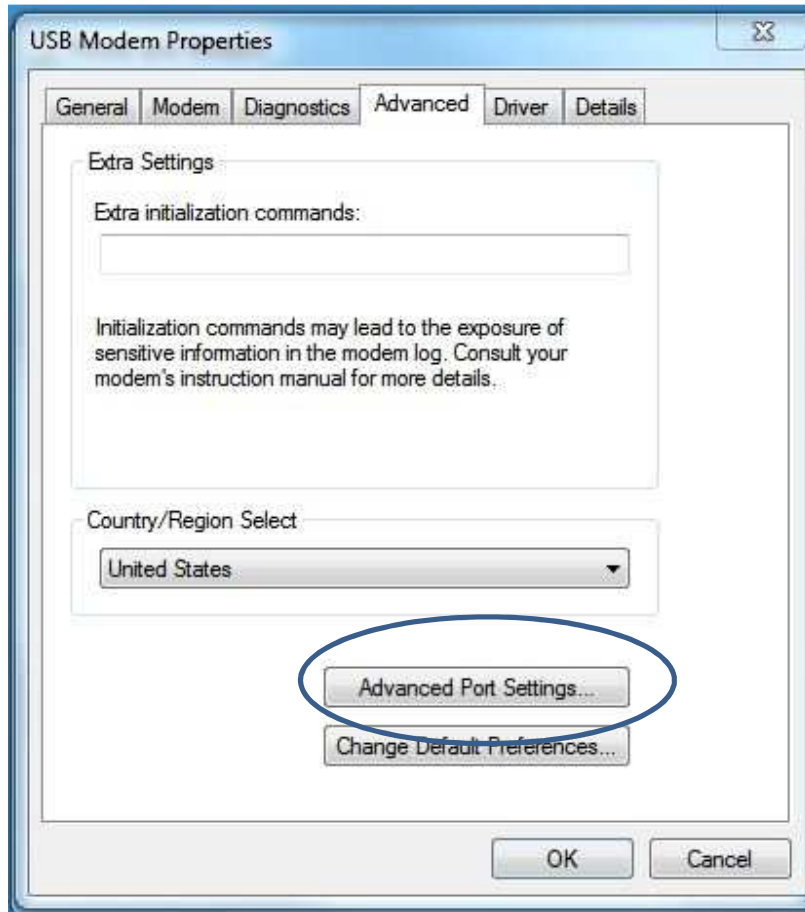
For all SES TEC and CAT products, change them to these settings:



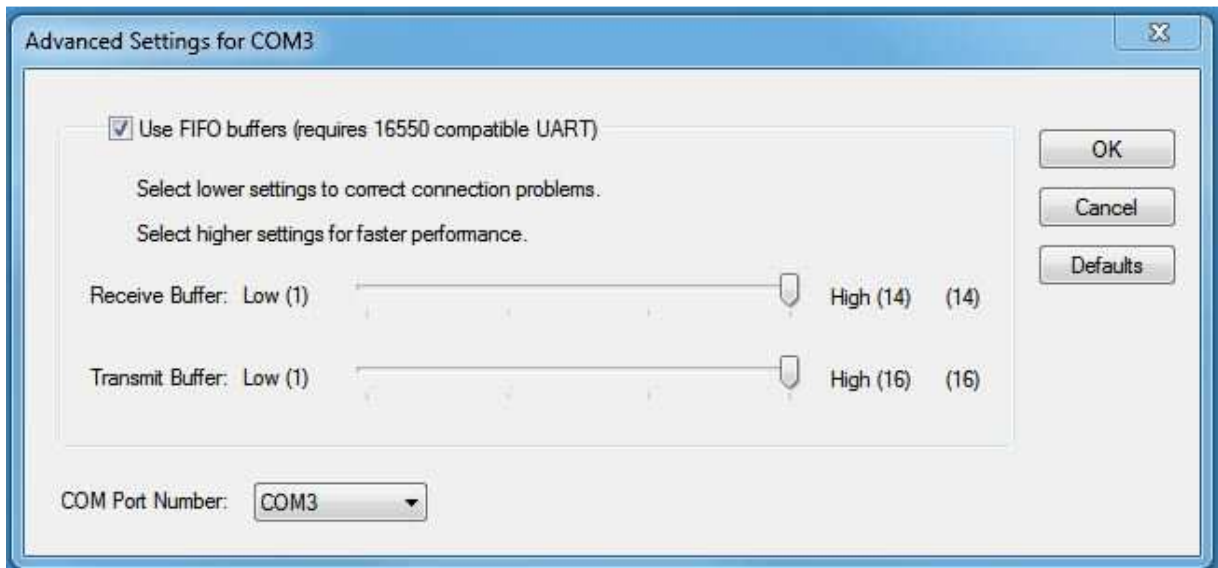
For Select Gate products, change to these settings:



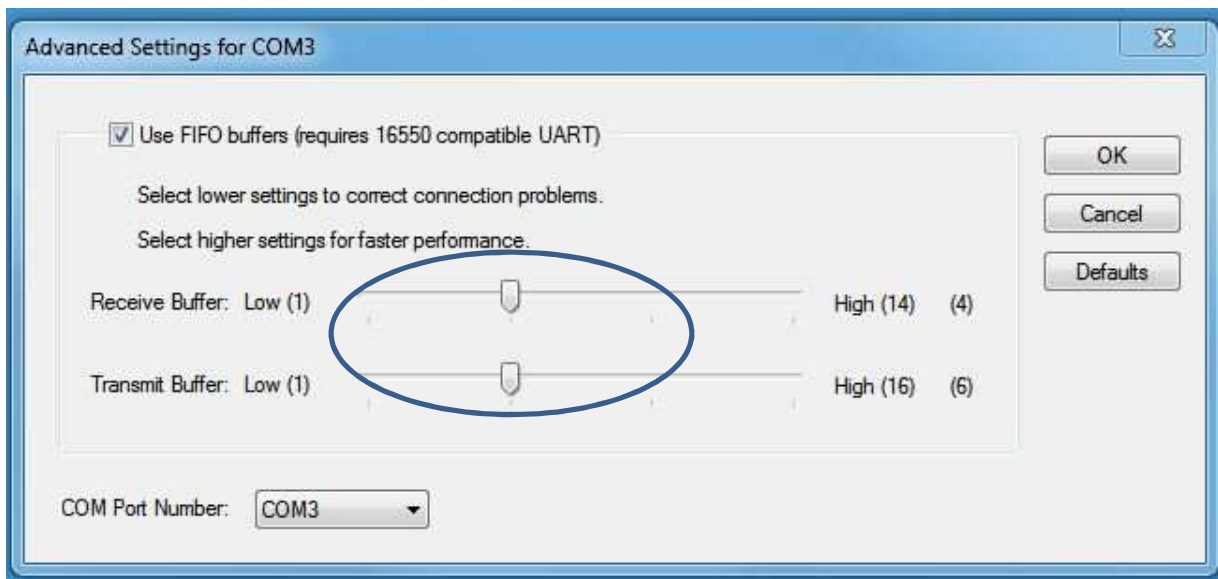
Some modems may require reduced FIFO buffer settings.
Click on Advanced Port Settings:



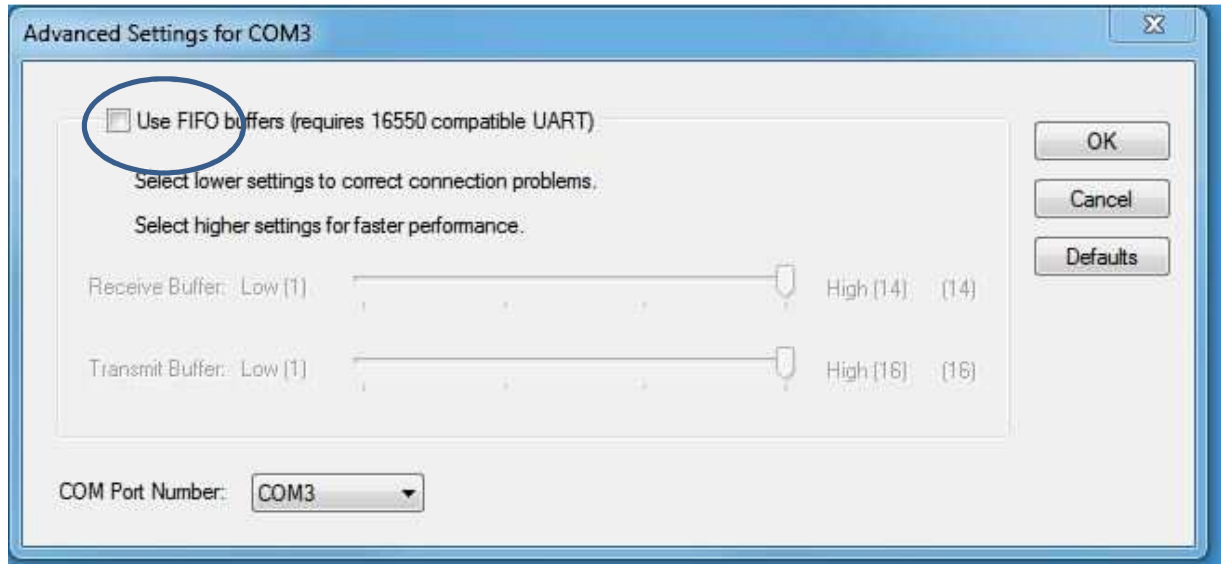
This is the default FIFO buffers screen:



Change the FIFO pointers to the one-third mark as shown:



For Windows 8 or 8.1 systems, some modems may require having the FIFO buffers disabled. Perform this by un-checking the Use FIFO buffers check box, as shown:



Your dial-up modem should be ready to correctly communicate with SES products over a dial-up phone line.

In some cases, depending on type of modem or type of phone carrier, the modem may connect more reliably, if Data Protocol is set to Standard EC as shown below. Change this setting only if unsuccessful using the recommended settings.

