

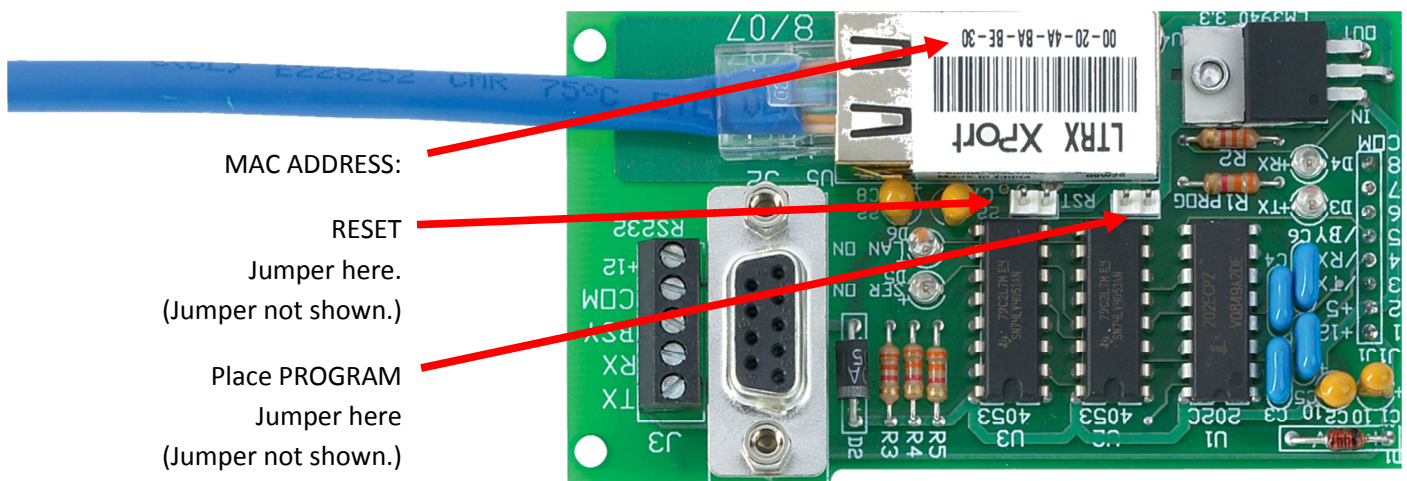
HOW TO CHANGE NIC2 FROM DHCP TO A FIXED IP ADDRESS

Standard NIC2 Ethernet modules have factory set IP addresses set to 0.0.0.0 so that a DHCP (Dynamic Host Configuration Protocol) server may assign an IP address on the appropriate sub-net. If a DHCP server is not available or if a specific IP address is desired the NIC2 may be user configured differently from the factory defaults.

NOTE: SES warranty void for any user configured NIC2 modules. Modifications are performed at user's own risk.

To perform this configuration change you will require:

- 1) A working copy of Lantronix CPR Manager v. 4 .x.x. or newer, installed on your computer.
- 2) A web browser.
- 3) 2 shorting jumpers. (Not supplied by SES.)



(Figure above rotated to match orientation on main PC board.)

Record the MAC address for future reference. This is especially useful if you have several SES panels using NIC2 modules to keep track of the specific panel being programmed.

Place a jumper across the two Program pins and leave it in place.

Temporarily jump the Reset pins. (Do not leave reset jumper in place.) This forces the NIC2 to restart in program mode.

Start the Lantronix CPR Manager software supplied with the NIC2 module to determine and record the current IP address as shown in the illustration on the following page.

HOW TO CHANGE NIC2 FROM DHCP TO A FIXED IP ADDRESS

CPR Manager 4.3.0.2

File Com Port Device Tools Help

Add/Remove Save Refresh Search For Devices Exclude

Com Ports Hide Com Port List General Tests

All Com Ports (7)

- Com 1 - 10
 - Com 1 (Inaccessible)
 - Com 3 (Inaccessible)
 - Com 4 (Inaccessible)
 - Com 5 (Inaccessible)
 - Com 6 (Inaccessible)
 - Com 9
 - Com 10

Com Port	IP Address	TCP Port	Com Status	Network Status
Com 1 (Inaccessible)				
Com 3 (Inaccessible)				
Com 4 (Inaccessible)				
Com 5 (Inaccessible)				
Com 6 (Inaccessible)				
Com 9	10.0.0.209	10001	Closed	Disconnected
Com 10	10.0.0.202	10001	Closed	Disconnected

Device List

IP Address	# Ports	TCP Port	Product	HW Address	Network Interface	Device Name
10.0.0.202	1	10001	XPort-03/04	00:20:4A:F4:26:5D	10.0.0.60	
10.0.0.211	1	10001	XPort-03/04	00:20:4A:F8:18:A1	10.0.0.60	
10.0.0.210	1	10001	XPort-03/04	00:20:4A:D4:FA:D1	10.0.0.60	
10.0.0.204	1	10001	XPort-03/04	00:20:4A:D4:FA:D3	10.0.0.60	
10.0.0.208	1	10001	XPort-03/04	00:20:4A:CA:A7:8B	10.0.0.60	
10.0.0.207	1	10001	XPort-03/04	00:20:4A:C9:9C:44	10.0.0.60	
10.0.0.209	1	10001	XPort-03/04	00:20:4A:F2:B0:1C	10.0.0.60	
10.0.0.205	1	10001	XPort-03/04	00:20:4A:CC:AC:14	10.0.0.60	
10.0.0.206	1	10001	XPort-03/04	00:20:4A:C5:E7:E7	10.0.0.60	

In this example, the NIC2 with MAC address 00:20:4A:F4:26:5D is currently addressed as IP address 10.0.0.202

Close CPR Manager, start browser and key in the previously recorded IP address shown by CPR Manager. Our example is <http://10.0.0.202> (Not https)

You will be prompted with this screen:

Authentication Required

Enter username and password for <http://10.0.0.202>

User Name:

Password:

OK Cancel

Key in "admin" as the user name. Do NOT attempt to key in a password. Click on OK.

Authentication Required

Enter username and password for <http://10.0.0.202>

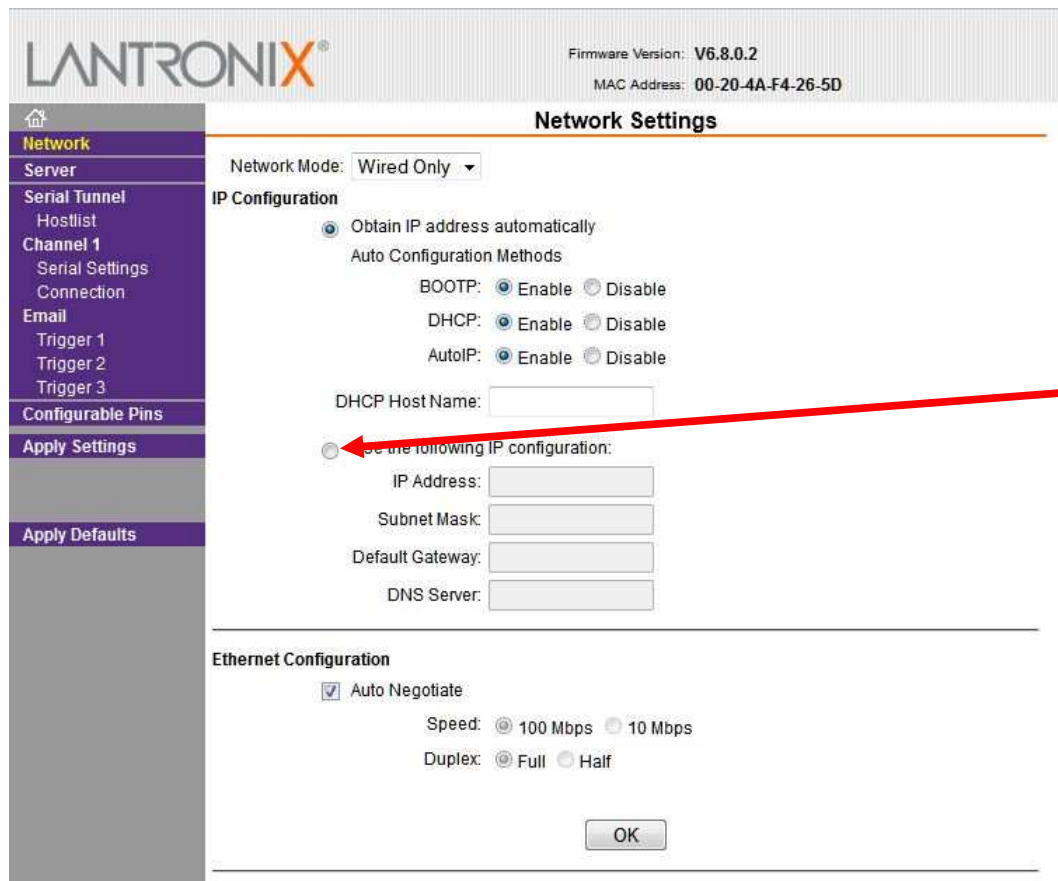
User Name:

Password:

OK Cancel

HOW TO CHANGE NIC2 FROM DHCP TO A FIXED IP ADDRESS

This is the opening screen of the NIC2 Device Server Configuration Manager on your browser interface. Click on: Network.

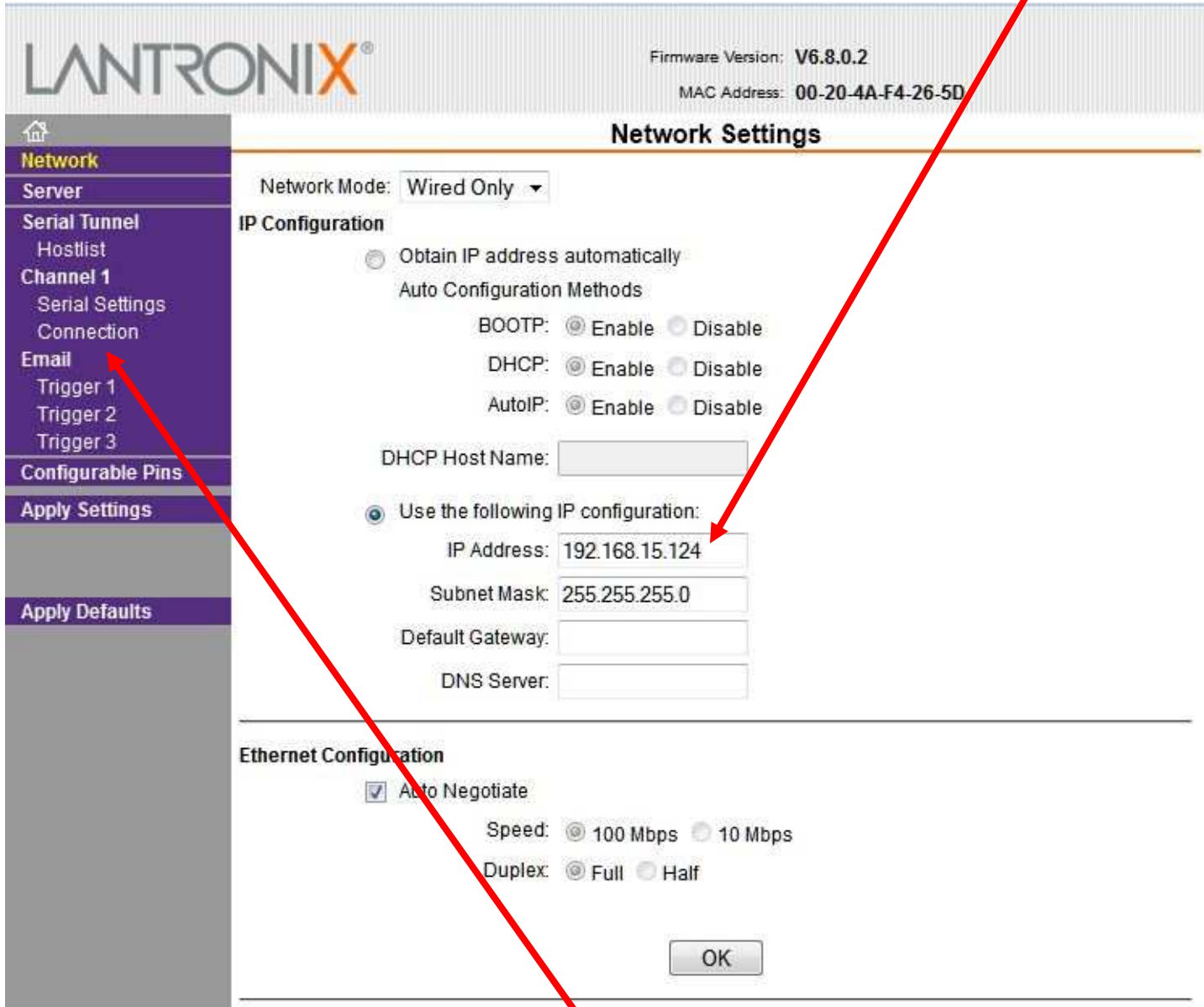


This is the default Network settings screen.

Click on the radio button to set the IP configuration.

HOW TO CHANGE NIC2 FROM DHCP TO A FIXED IP ADDRESS

In this example, we are changing the IP address to: 192.168.15.124 with a subnet mask of 255.255.255.0 Consult your network administrator for specific IP addresses and subnet masks that are required for your particular network. We are not using a default gateway address or DNS server, although it can be keyed in, if desired.



The default port used in the SES NIC2 is port 10001. If the port needs to be set to a different value, click on the Channel 1 Connection tab on the left side of the screen.

HOW TO CHANGE NIC2 FROM DHCP TO A FIXED IP ADDRESS

Change the Local Port value to any valid port number desired, if required for specific applications.

NOTE: Reserved ports, such as 8080 are not recommended.

The screenshot shows the LANTRONIX web interface for 'Connection Settings'. The left sidebar contains a navigation menu with items: Network, Server, Serial Tunnel, Hostlist, Channel 1, Serial Settings, Connection (highlighted), Email, Trigger 1, Trigger 2, Trigger 3, Configurable Pins, Apply Settings, and Apply Defaults. The main content area is titled 'Connection Settings' and includes the following sections:

- Channel 1**
- Connect Protocol**: Protocol: TCP
- Connect Mode**
 - Passive Connection:** Accept Incoming: Yes; Password Required: No; Password: [empty]; Modem Escape Sequence Pass Through: Yes
 - Active Connection:** Active Connect: None; Start Character: 0x0D (in Hex); Modem Mode: None; Show IP Address After RING: Yes
- Endpoint Configuration:** Local Port: 10001; Remote Port: 0; Remote Host: 0.0.0.0; Auto increment for active connect: [unchecked]
- Common Options:** Telnet Com Port Cntrl: Disable; Connect Response: None; Terminal Name: [empty]; Use Hostlist: No; LED: Blink
- Disconnect Mode**: On Mdm_Ctrl_In Drop: No; Hard Disconnect: Yes; Check EOT(Ctrl-D): No; Inactivity Timeout: 0 : 0 (mins : secs)

An 'OK' button is located at the bottom of the settings area. A red arrow points from the top of the page down to the 'Local Port' input field.

HOW TO CHANGE NIC2 FROM DHCP TO A FIXED IP ADDRESS

The screenshot shows the LANTRONIX Network Settings page. At the top, the LANTRONIX logo is on the left, and the Firmware Version (V6.8.0.2) and MAC Address (00-20-4A-F4-26-5D) are on the right. A left-hand navigation menu includes options like Network, Server, Serial Tunnel, Channel 1, Email, Configurable Pins, Apply Settings, and Apply Defaults. The main content area is titled "Network Settings" and contains two sections: "IP Configuration" and "Ethernet Configuration". In the "IP Configuration" section, the "Network Mode" is set to "Wired Only". There are two radio buttons: "Obtain IP address automatically" (which is currently selected) and "Use the following IP configuration:". Under "Obtain IP address automatically", there are "Auto Configuration Methods" for BOOTP, DHCP, and AutoIP, each with "Enable" and "Disable" radio buttons. Below these are input fields for "DHCP Host Name". In the "Use the following IP configuration:" section, there are input fields for "IP Address" (192.168.15.124), "Subnet Mask" (255.255.255.0), "Default Gateway", and "DNS Server". In the "Ethernet Configuration" section, "Auto Negotiate" is checked, and there are radio buttons for "Speed" (100 Mbps and 10 Mbps) and "Duplex" (Full and Half). At the bottom right of the form is an "OK" button, which is pointed to by a red arrow.

When all changes have been completed, click on OK button.

If no illegal or out of range combinations have been selected, the page will display a "Done!" indication.

This screenshot is identical to the one above, showing the LANTRONIX Network Settings page with the same configuration. However, in this version, the "Done!" button at the bottom right is circled in blue, and a red arrow points from the text above to this button. The "OK" button is also visible next to it.

HOW TO CHANGE NIC2 FROM DHCP TO A FIXED IP ADDRESS

Once "Done!" is displayed, click on the Apply Settings tab to save the configuration changes.

LANTRONIX
Firmware Version: V6.8.0.2
MAC Address: 00-20-4A-F4-26-5D

Network
Server
Serial Tunnel
Hostlist
Channel 1
Serial Settings
Connection
Email
Trigger 1
Trigger 2
Trigger 3
Configurable Pins
Apply Settings
Apply Defaults

Please wait while the configuration is saved...
The unit will reboot in order for the settings to be applied.

While the flash memory is being written, you may see a progress window of incrementing blue rectangles, as shown above.

LANTRONIX
Firmware Version: V6.8.0.2
MAC Address: 00-20-4A-F4-26-5D

Network
Server
Serial Tunnel
Hostlist
Channel 1
Serial Settings
Connection
Email
Trigger 1
Trigger 2
Trigger 3
Configurable Pins
Apply Settings
Apply Defaults

Please wait while the configuration is saved...
The unit will reboot in order for the settings to be applied.

Network Connectivity settings have been modified.
Please point the browser to the new IP address with the correct HTTP Server Port in order to continue using the web based configuration manager.

After configuration settings have been saved, it will be necessary to key in the new IP address in the web browser, since the NIC2 is no longer using the same IP address as previously entered.

It is recommended at this time, that the Program jumper be removed and the reset jumper be momentarily jumped. This will force the NIC2 to reset and call up the stored flash memory configuration settings to verify that the IP address and any other configuration settings were saved correctly.