

RHRFSPWV3 Select Pass Wiegand Receiver

User Guide



Select Entry Systems



RADIO RECEIVER RHRFSPWV3

GENERAL INFORMATION

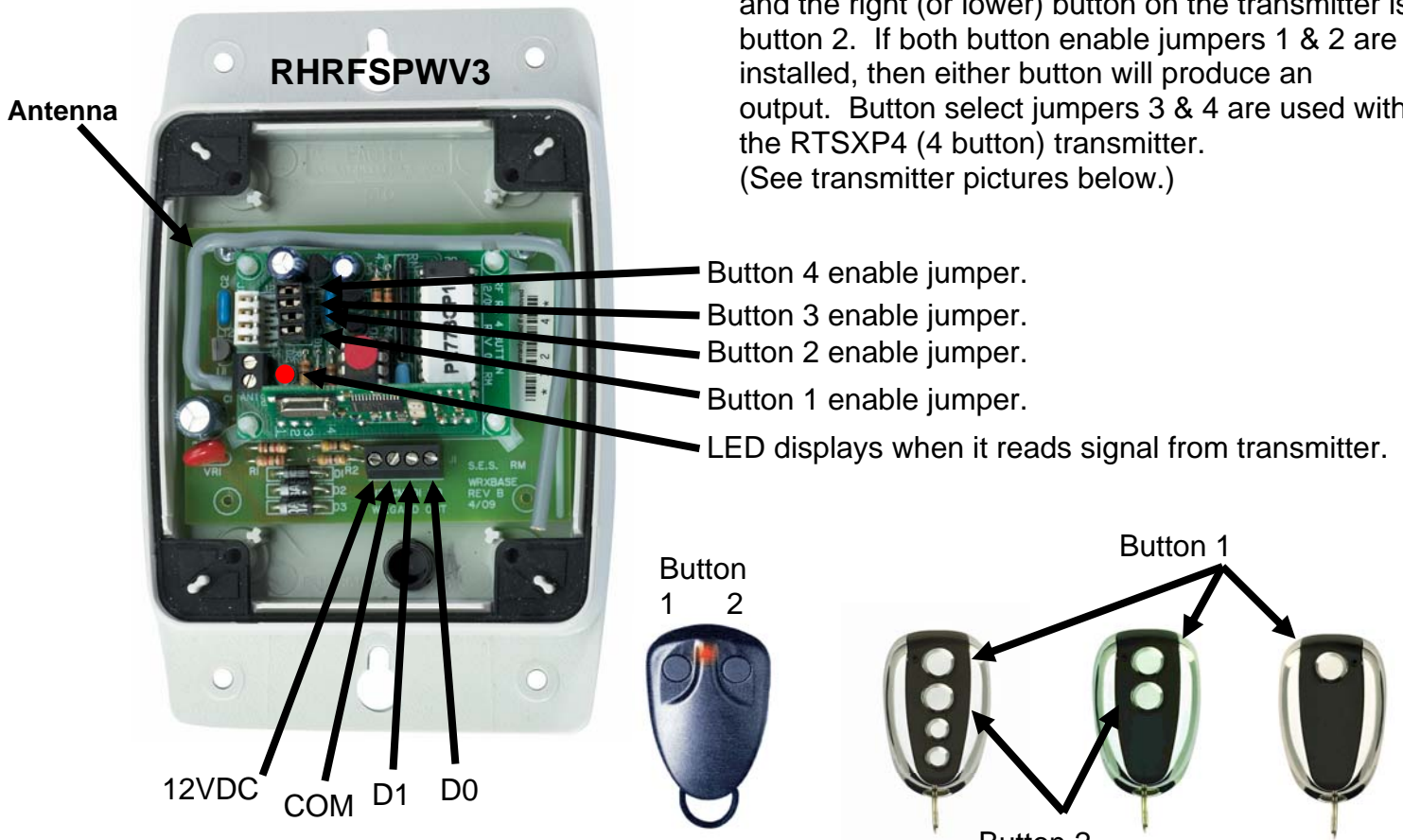
The RHRFSPW (v.3) is a 54-bit rolling-code radio receiver for connection to an access control system. The code received is decrypted, then sent to the Wiegand data output terminals, where it can be read from a card reader.

WARNING: Wire attached to Antenna is a specific wave-length. Bending or moving it, WILL result in reduced or poor reception. Follow antenna outline printed on pcb to repair. Where greater signal or range is desirable, refer to the (optional) external antenna kit documentation. P/N RHRFSPANT433

TECHNICAL SPECIFICATIONS

Power supply : 12 Volts DC
 Power consumption : 30mA
 Receiver type : Super-heterodyne
 Reception frequency : 433.920 MHz
 Frequency stability : +/- 180 PPM
 Receiver sensitivity : < 1.0 uV
 Code received : 54 bits rolling code
 Operating temperature : -15C to +55C
 Dimensions : 5.5" x3.6" x 1.7"
 Weight : 6.5 oz
 Output format : Wiegand

BUTTON CONFIGURATION: The button select jumpers enable the transmitter button. The left (or upper) button on the transmitter is button 1 and the right (or lower) button on the transmitter is button 2. If both button enable jumpers 1 & 2 are installed, then either button will produce an output. Button select jumpers 3 & 4 are used with the RTSXP4 (4 button) transmitter. (See transmitter pictures below.)



RHRFSPWV3 Connection Definitions

- 12 12 Volts DC
- COM Common for Power & Data
- D1 Wiegand Data 1
- D0 Wiegand Data 0

2 Button Transmitter
 RTSP2
 (Older style)

4 Button Transmitter
 RTSXP4

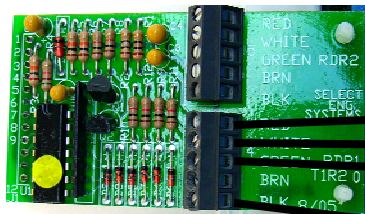
2 Button Transmitter
 RTSPX2

1 Button Transmitter
 RTSPX1

RHRFSPWV3 RADIO RECEIVER READER CONNECTIONS

This diagram shows the connections from the RFRHSPWV.3 to various SES card reader modules found in the CAT and TEC series access control units. The RFRHSPWV3 can also be connected to the card reader input on the SG3DMR, for people who require a 2nd RF receiver (one is already built-in to SG3DMRs) to control the 2nd relay, using discrete buttons on the RTSXP2 transmitters.

2 Reader module.



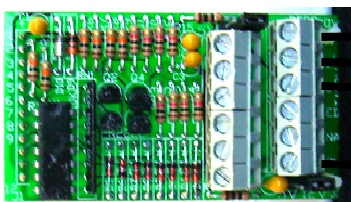
Belden 9940 cabling,
500 feet maximum distance.
Cut and tape shield at receiver end.
Ground shield at card reader end to earth ground stud in back box.

12 VDC
Data 1
Data 0
Common



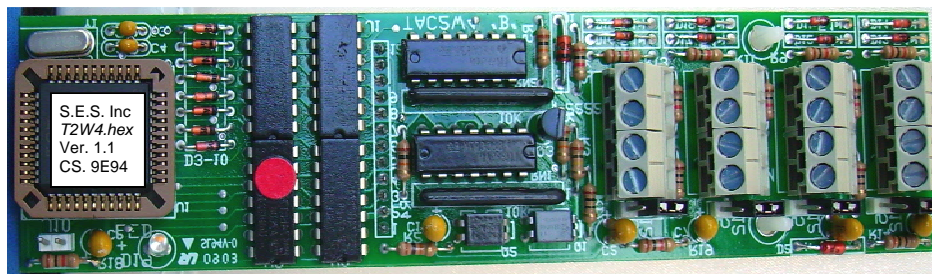
Data 0
Data 1
Common
12 VDC

(Older style, superseded by above reader module.)



12 VDC
Data 1
Data 0
Common

Belden 9940 shielded cable

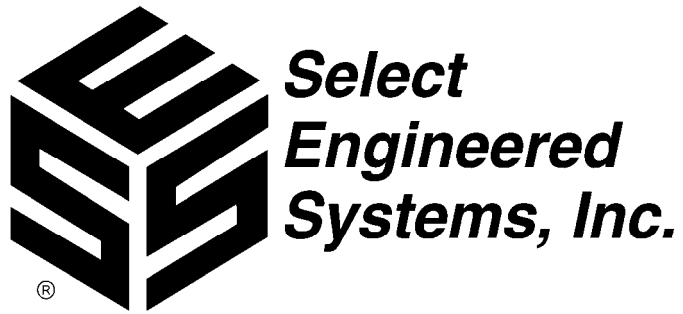


12 VDC
Data 1
Data 0
Common

4 Reader module.

12 VDC	= Red	Belden 9940
Common	= Black	Color code
Data 1	= White	
Data 0	= Green	

09/09



RHRFSPWV3

Select Engineered Systems, Inc.
7991 West 26th Avenue
Hialeah, Florida 33016
Phone: 800.342.5737
Fax:305.823.5215